



Maintenance / Troubleshooting / Repair

Repair Instructions

Removing the cover

Removing and checking the control unit

Removing the glow pin

Removing the lining

Removing and checking the overheat and flame sensor

Installing the overheat and flame sensor

Dismantling the heat exchanger

Removing the combustion air blower

Removing the combustion chamber

Note: Remove power from the heater prior to any disassembly by unplugging main connection or removing main fuse.

If gasket was removed during disassembly, replace it when reassembling.

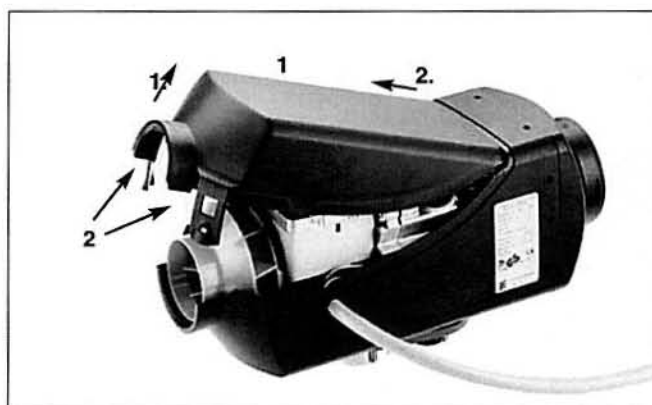
Clean all parts before reassembly and check for any signs of damage, replace where necessary.

Note: The cover must always be removed from the AIRTRONIC for all repair stages. You may have to wait for the device to cool down.

Removing the cover from the AIRTRONIC

Unlock both seal plates, lift cover and pull to the front.

The cable harness can exit from the left or right of heater shell.



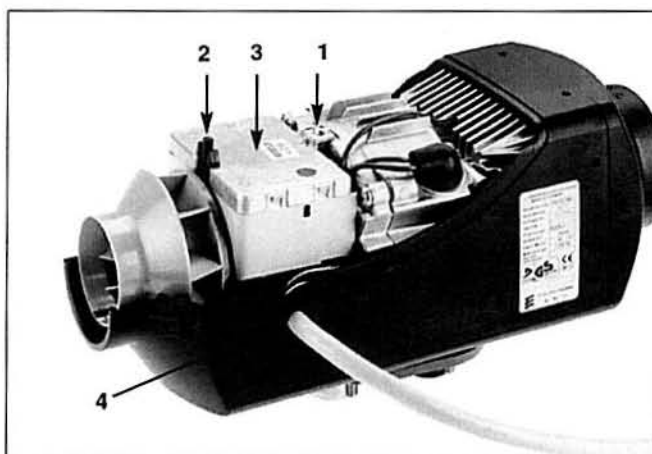
Cover 1
Seal Plates 2

Removing the control unit

Remove the AIRTRONIC cover.

Unscrew fastening screw, press retaining brackets together, lift out ECU. Unclip the lines from the holder of the control unit (observe the positions of the lines). Remove the bushing (lower part) from the outer case. Disconnect the control unit from the controller. The ECU can now be removed.

Note: When reassembling the ECU, ensure that the lines are correctly clipped in the holder of the ECU, and that the connectors are plugged into the ECU (non-interchangeable).



Fastening screw 1
Retaining brackets 2
ECU 3
Bushing 4

Maintenance / Troubleshooting / Repair

Heater Casing Disassembly

- Remove the AIRTRONIC cover.
- Remove the ECU.

Disconnect the connector of the glow pin cable harness from the ECU.

Remove the rubber grommet and use the special tool to unscrew the glow pin.

The special tool is included with the glow pin.*

Tighten torque of the glow pin: 6^{-0.5} Nm (50 in•lb)

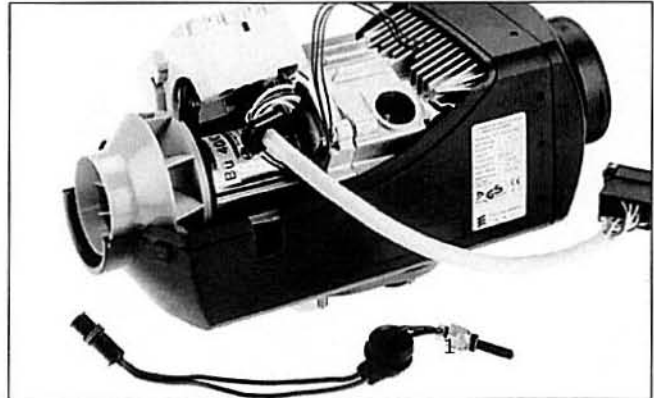
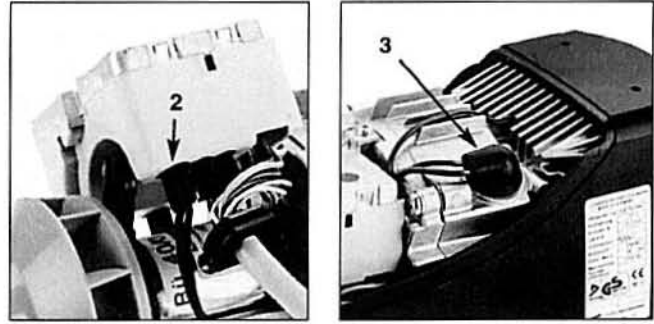
A-NOTCHED 12 MM SOCKET WILL WORK →

Note: Please check Pg. 37, item 20 for more information.



Note: When the glow pin has been removed, check the screen of the support in installed state for any contamination. The screen must be replaced if the surface is covered with carbon.

- Glow Pin 1
- Connector of glow pin cable harness 2
- Rubber bushing 3



Removing the screen

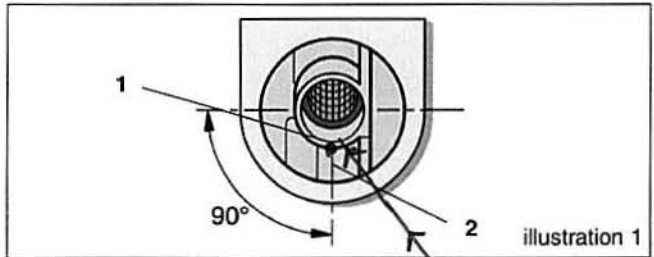
Pull the screen out of the support with pointed pliers. Blow out the support with compressed air. If necessary, carefully pierce with a wire.

The special tool has to be used to install the screen. The special tool is included with the screen. Push the screen onto the special tool, watching the position of the recess. The recess must be positioned at right angles (90°) to the axis of the heater.

Newer screens do not have a recess.

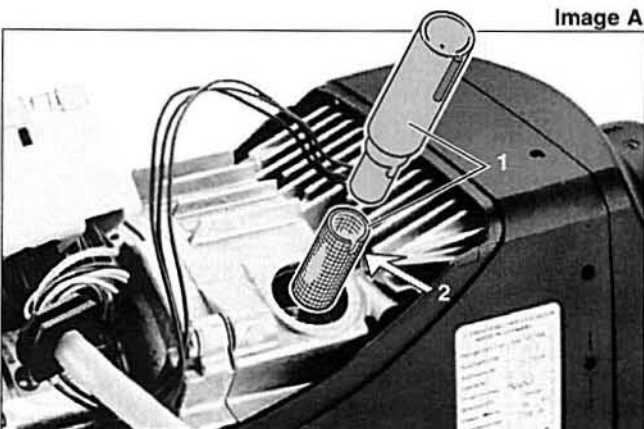
Push the tool with the screen carefully as far as it will go, ensuring that the bore (ø 2.7 mm) for the glow plug ventilation is free. See illustration 1.

In case of the shorter, new style screen (see image B) the position of the screen to the vent hole has no reference. Ensure installation tool is completely seated when installing screen.

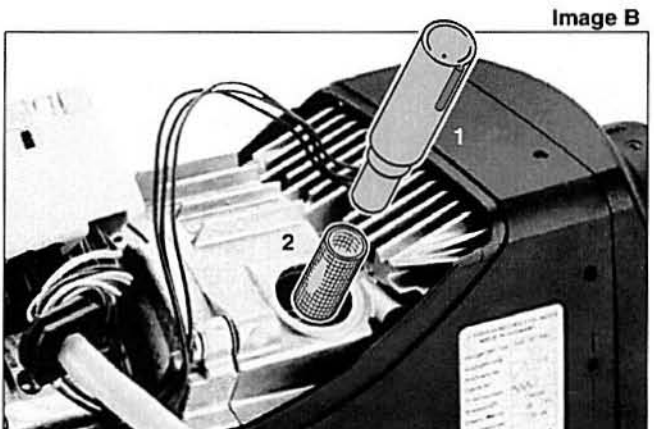


- 1 Screen
- 2 Bore (ø 2.7 mm) for glow pin ventilation

3. CLEAN OUT GLOW PIN VENT HOLE WITH A RIGHT ANGLE PIC



- 1 Special tool
- 2 Position of recess



- 1 Special tool
- 2 Screen